

4G Battery Monitor Specification Sheet - SKU: CM-4GBM

Device Features

- ✓ Compatible with 12V, 24V, 36V, and 48V, as well as all battery types, including lithium, enabling precise monitoring of battery health, charging status, and voltage.
- ✓ 2G/4G LTE-CAT1 connectivity is available throughout the UK and Europe on all networks, just like your mobile phone device.
- ✓ £4 PCM + VAT per month for 15 minute updates*.
- ✓ GPS enables continuous location tracking of assets, including the implementation of geofencing.
- ✓ Minimal power consumption of 4mAh @ 12VDC with GPS.
- ✓ Made in the UK with a full UK based team.



Operations Benefits

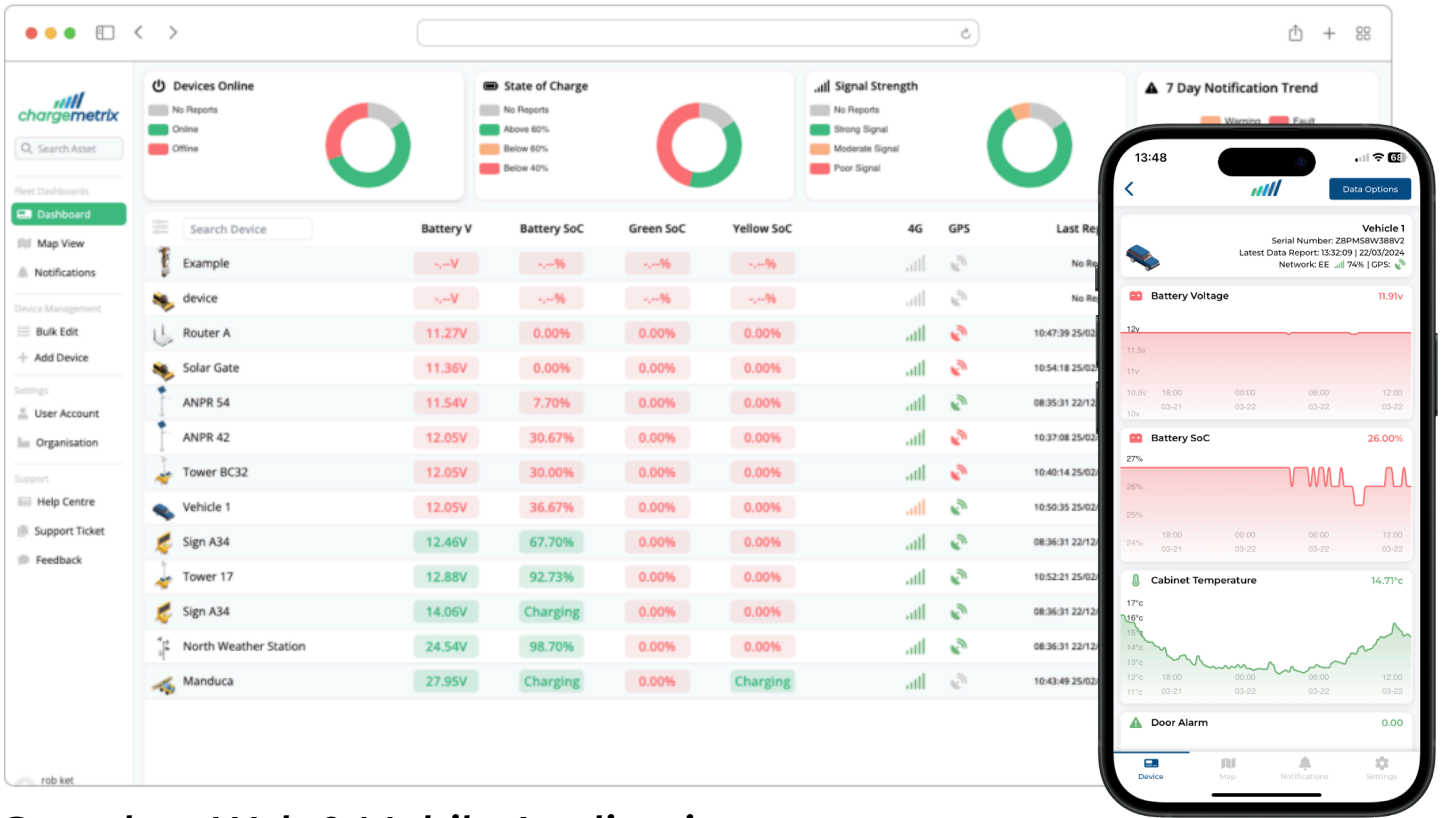
- Designed for Businesses and Individuals
- Access data in web browser or via Native Mobile apps
- Receive unlimited mobile push or email notifications.
- Remotely monitor battery data from anywhere in the world across up to 3 battery banks per device.
- Get the run time of Green/Yellow connected wires for monitoring of switches and inputs, solar, load etc.
- View live location and historical data for all movements of equipment.
- Add a geofence in the cloud to be notified of movement..
- Allows access to data for all engineers in your organisation
- Includes device temperature, signal strength and operator, switches automatically on low signal.
- Add security elements through our trigger wire system or with impact detection.

Technical Specifications		Device Functionality	
Materials & IP Rating	PC/ABS, A2 Stainless fittings, TPU rubber, IP54	Batteries	1x Main Battery & 2x Additional 0-72VDC
Size & Mounting	110mm x 95mm x 35mm, 4x M4 bolt	Temperature	1x Onboard
Connectivity	-EU 2G, 4G CAT1 LTE EU bands -GL 2G,3G,4G Cat1 LTE Global Bands	Sensor Run Time	YES for both Green & Yellow Wires
Operating Power	7 - 70 VDC	Trigger Wake - Boot	YES - White Wire
Power Draw @ 12VDC	15 minute = 4mAh	Vibration/Tilt	TILT - VIB Runtime Only
Report Interval	15 Minutes or 90 second rapid update in Boot mode	Impact - Boot	1.8G Rating to Trigger

All Chargemetrix hardware comes pre configured, simply fit the unit and scan the device to your account in the web app or via the mobile app. The unit only runs in 15 minute cycles or boot mode.

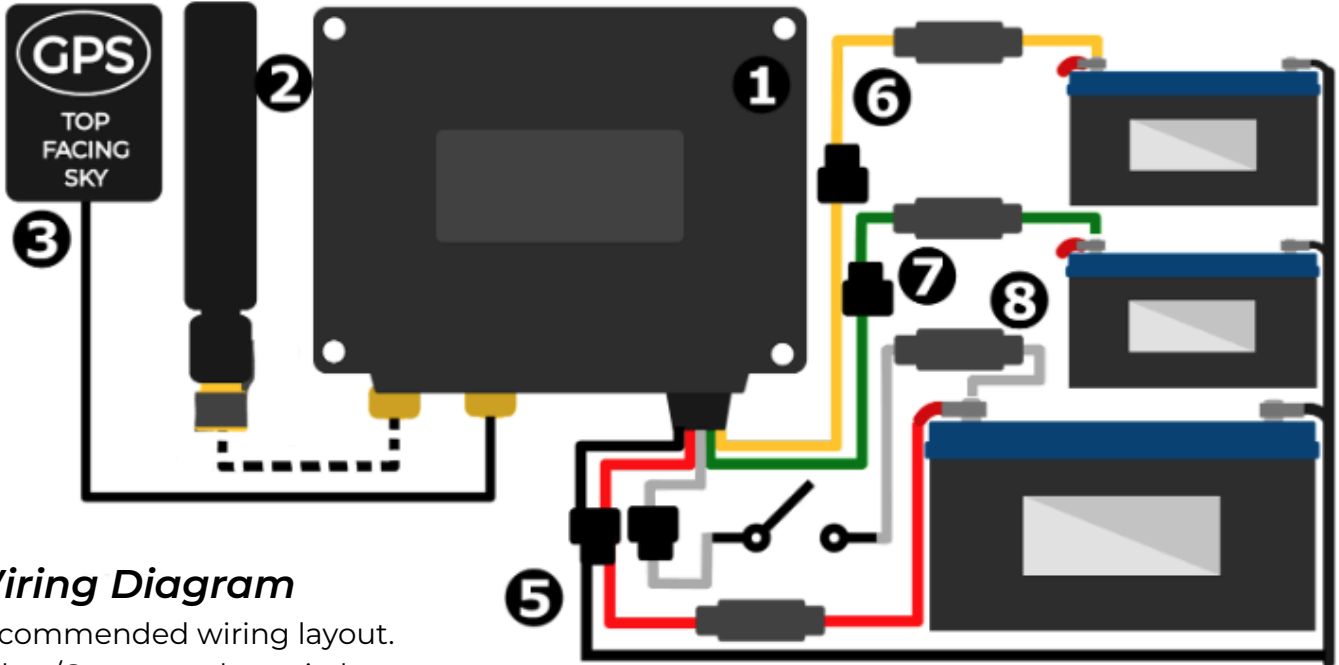
A fair use policy applies for the White Boot wire, if wired in permanently for faster updates, power consumption will increase and the subscription charges will increase by £4 PCM. Fair use accounts for 5% utilisation.

* For global use a 50% surcharge will apply due to additional roaming costs.



Seamless Web & Mobile Applications

Providing access on any device, receiving notifications for all connected sensors, battery voltage, temperature, movement, and more. Delivered via Email or Push notification and stored in the cloud for life. Get access to 30 days of historical data for assessing asset performance and finding issues across all sensor channels. Data can be easily compared using our compare function.



Wiring Diagram

Recommended wiring layout. Yellow/Green can be switches.

1. IY-LITE	2. 4G Antenna	3. GPS Antenna	
5. Fused Power Loom INCLUDED	6. Yellow Wire INCLUDED	7. Green Wire INCLUDED	8. White Wire INCLUDED

Additional looms can be purchased in the correct colour & lengths 2.5m, 5m, 10m, 20m, 20AWG stranded tinned copper silicone jacket.

Web - chargematrix.com | Email - sales@chargematrix.com | Phone - 01983 897179